

# Southborough Open Land Foundation

## Properties with Walking Trails

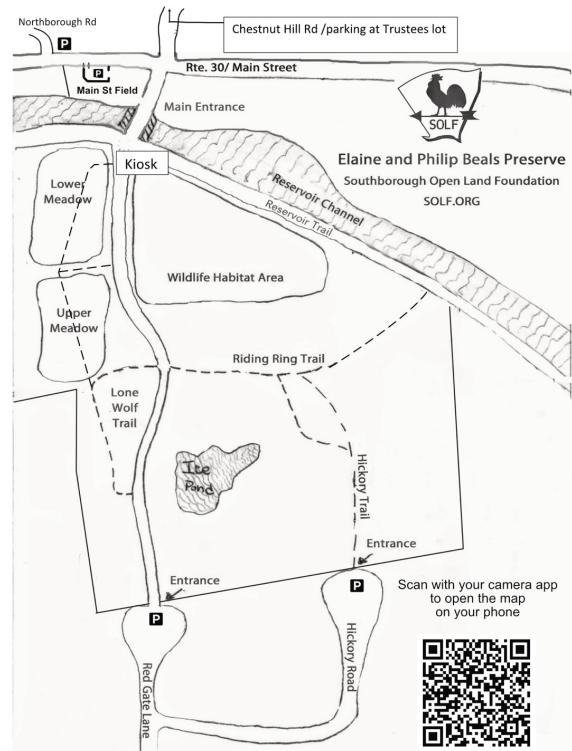
**SOLF.ORG**



### The Elaine and Philip Beals Preserve

The Elaine and Philip Beals Preserve is a 58.5 acre parcel of open space off Main Street, featuring woodland, meadows, a pond, and marshes, with hiking trails. Access to Beals Preserve is from Route 30 (Main Street), Red Gate Lane, Hickory Road, or the Sudbury Reservoir Trail.

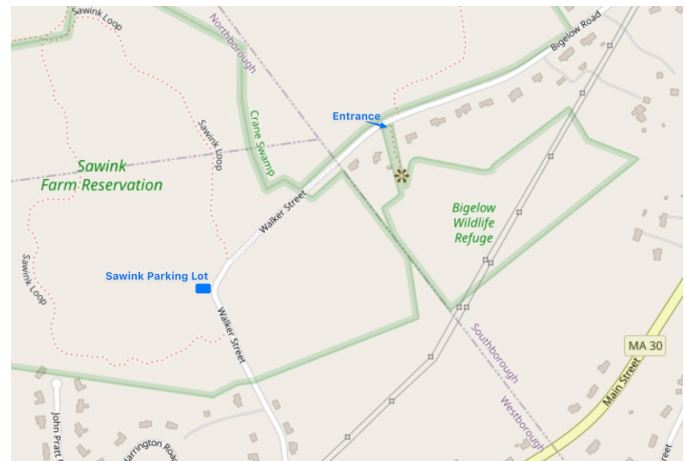
<https://solf.org/beals-preserve/>



### Bigelow Wildlife Refuge

The Bigelow Wildlife Refuge is a 19.4 acre property that includes a beautiful wetland swamp and woodland that can be explored along SOLF's new, 300-foot path to a viewing platform. Access is on Bigelow Road. Park on the wood chips parallel to the road, or park at SVT Sawink and walk the unpaved road.

<https://solf.org/bigelow-wildlife-refuge/>





# Southborough Open Land Foundation

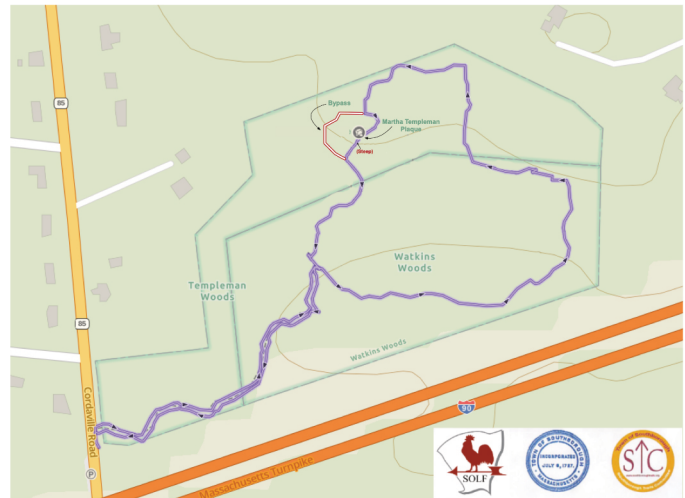
## Properties with Walking Trails

### SOLF.ORG

#### Templeman Woods/ Watkins Woods

Templeman Woods, on Cordaville Road, comprises 8.2 acres of wooded upland area with glacial rock formations. Trail access crosses wetlands on bog bridges. Abuts town Watkins Woods, and the trail runs through both properties.

<https://solf.org/templeman-woods/>



#### Clark Grove

Clark Grove, on Highland Street, comprises 0.7 acres of wooded area adjacent to the Southborough Center for the Arts. It's a nice place to wander and reflect. There is a small trail that runs vertically through the property.

<https://solf.org/clark-grove/>

